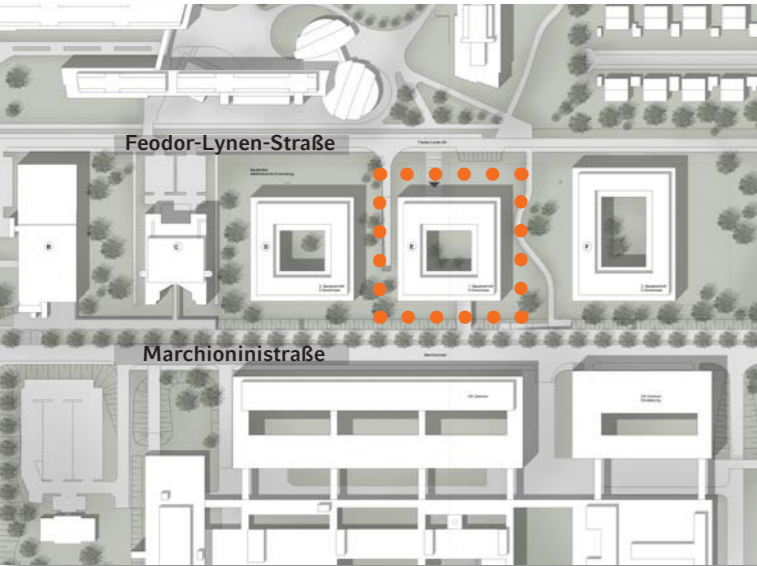


Center for Stroke and Dementia Research CSD



facts: sponsored by the research ministry of the state of Bavaria; 8.311 sqm of occupancy space; will host scientists from both Munich universities and the Helmholtz association; architects: Nickl & partners; move in expected for spring 2014

located on biomedical research campus LMU...

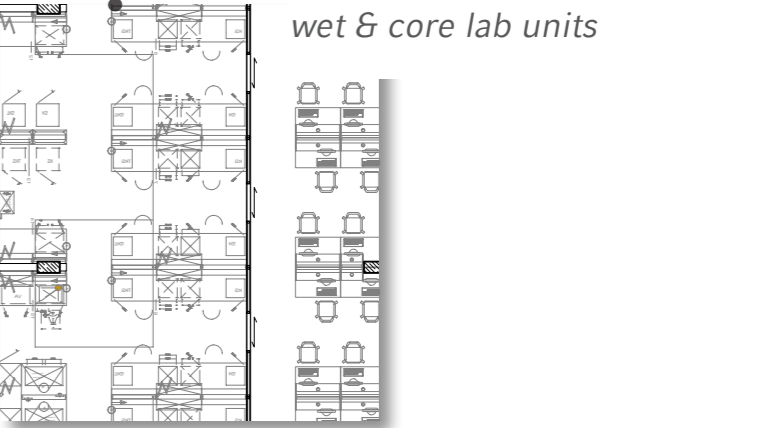
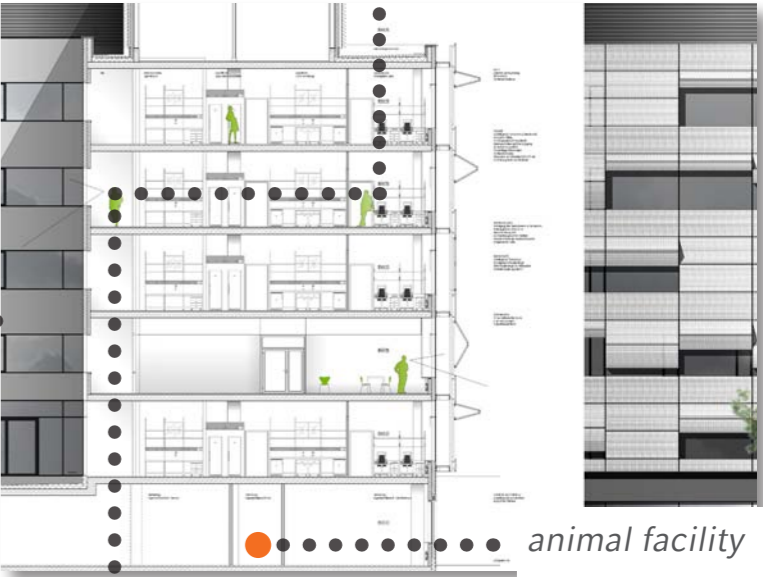
... the new building will host the Institute for Stroke and Dementia Research (ISD) and the German Center for Neurodegenerative Diseases (DZNE)



... there will be a dedicated outpatient clinic & clinical trials unit for cerebro-vascular disorders and patients with dementia...



... lecture halls, seminar rooms, and discussion corners offer ample opportunities for teaching and exchange...



...the new building will provide home to more than 200 basic and clinician scientists, technical and support staff.

